



YORKSHIRE'S  
**FINEST**  
HOMES COLLECTION





# Park Lane, Rothwell, Leeds

Offers In The Region Of  
£1,300,000



This magnificent home boasts over 5,000 square feet of opulent living space, complemented by a generous south-facing garden that invites abundant sunlight, making it a perfect retreat for relaxation and gatherings. Accessed through electric gates, this property ensures privacy and tranquility. Inside, you will find an array of impressive entertainment areas, stylish reception rooms, and a self-contained office/annex space, ideal for both leisure and work.



































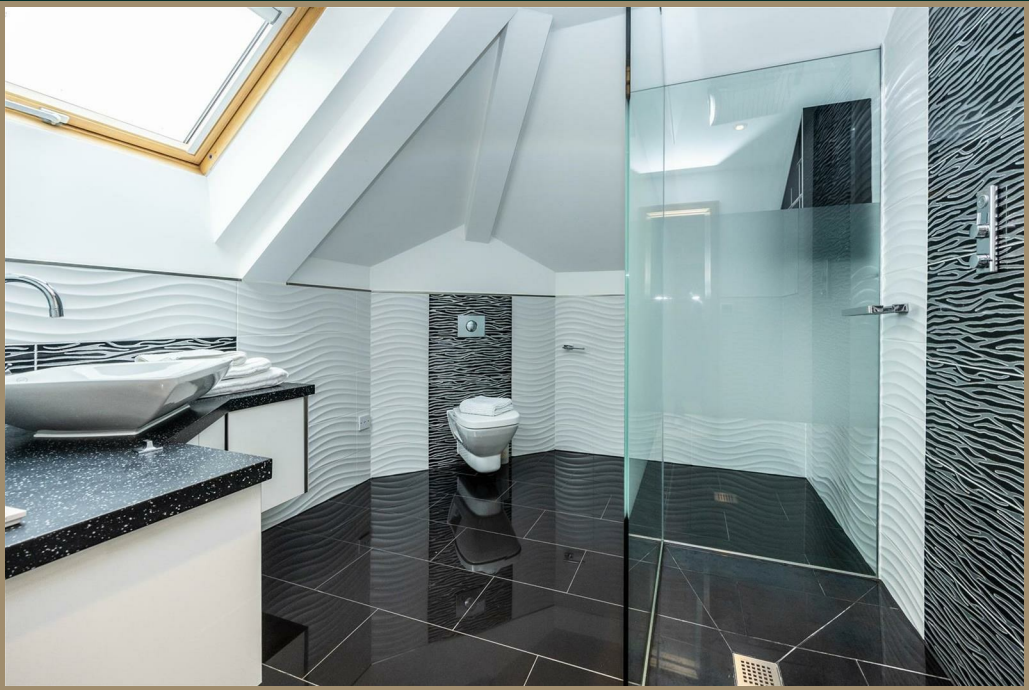
























To view Park Lane, Rothwell, Leeds  
Call : 01484 432 773  
Email : [huddersfield@yorkshiresfinest.co.uk](mailto:huddersfield@yorkshiresfinest.co.uk)