



YORKSHIRE'S
FINEST
HOMES COLLECTION



Snelsins Road, Cleckheaton

Offers In The Region Of

£750,000

- Stunning 5 Bedroom Detached Family Home
- Set Behind Electric Gates with Generous Off-Road Parking
- Modern Kitchen with Central Island & Integrated Appliances
- Beautifully Landscaped Gardens with Patio
- Spacious and Stylish Interiors Throughout
- Ideal for Entertaining & Family Living

Stunning 5/6 Bedroom Detached Family Home with Double Garage, Electric Gates & Beautiful Gardens

Welcome to this spacious and beautifully presented 5/6-bedroom home, perfectly designed for modern family living and entertaining. Set behind electric gates with generous off-road parking and a double garage, this exceptional property offers stylish interiors, flexible accommodation, and a seamless blend of comfort and elegance throughout.



Stunning 5/6 Bedroom Detached Family Home with Double Garage, Electric Gates & Beautiful Gardens

Welcome to this spacious and beautifully presented 5/6-bedroom home, perfectly designed for modern family living and entertaining. Set behind electric gates with generous off-road parking and a double garage, this exceptional property offers stylish interiors, flexible accommodation, and a seamless blend of comfort and elegance throughout.

Ground Floor

Entrance Hall

A warm welcome awaits as you step into the impressive entrance hall, finished with sleek grey floor tiles and underfloor heating. A wide staircase leads to the first floor. Double doors open into the kitchen diner/snug, with a further door to the downstairs cloakroom—ideal for visiting guests.

Lounge

A substantial lounge with high ceilings and tasteful décor, offering a peaceful space to relax and unwind. With dual access to the kitchen diner and views towards woodland, it's a perfect place to enjoy cozy evenings or entertain guests.

Kitchen Diner / Snug

The heart of the home—a stunning open-plan kitchen diner with a snug area. The beautifully designed kitchen features sleek units, a central island with breakfast bar, and integrated appliances including fridge/freezer, double ovens, Neff hob, and dishwasher. A large dining area comfortably accommodates family and guests, while the adjacent snug provides a cozy spot to relax. Bi-fold doors open to the rear garden, bringing the outdoors in and making it ideal for summer BBQs. A separate utility room mirrors the kitchen style and offers space for an American-style fridge/freezer, sink unit, and access to the double garage.





Study / Bedroom Six

Currently used as a large home office, this versatile room could serve as a sixth bedroom, playroom, or games room—flexible to suit your lifestyle needs.

Cloakroom

Well-appointed downstairs WC with stylish fittings, perfect for guests.

First Floor

Principal Bedroom Suite

A generous and elegant principal bedroom with neutral décor and woodland views. It includes a large dressing room and a spacious en-suite bathroom with a walk-in shower, dual wash basins, and WC.

Bedroom Two

Another generously sized double bedroom with neutral décor, enjoying views over the rear of the property. It benefits from its own en-suite featuring a corner shower with dual heads, vanity wash basin, and WC.

Bedrooms Three, Four & Five

Three further double bedrooms, all offering neutral décor, high ceilings, and plenty of space for growing families or visiting guests.

Family Bathroom

A luxurious family bathroom serving the remaining bedrooms, complete with a deep sunken bath, walk-in rainfall shower, large vanity wash basin, and WC.

External Features

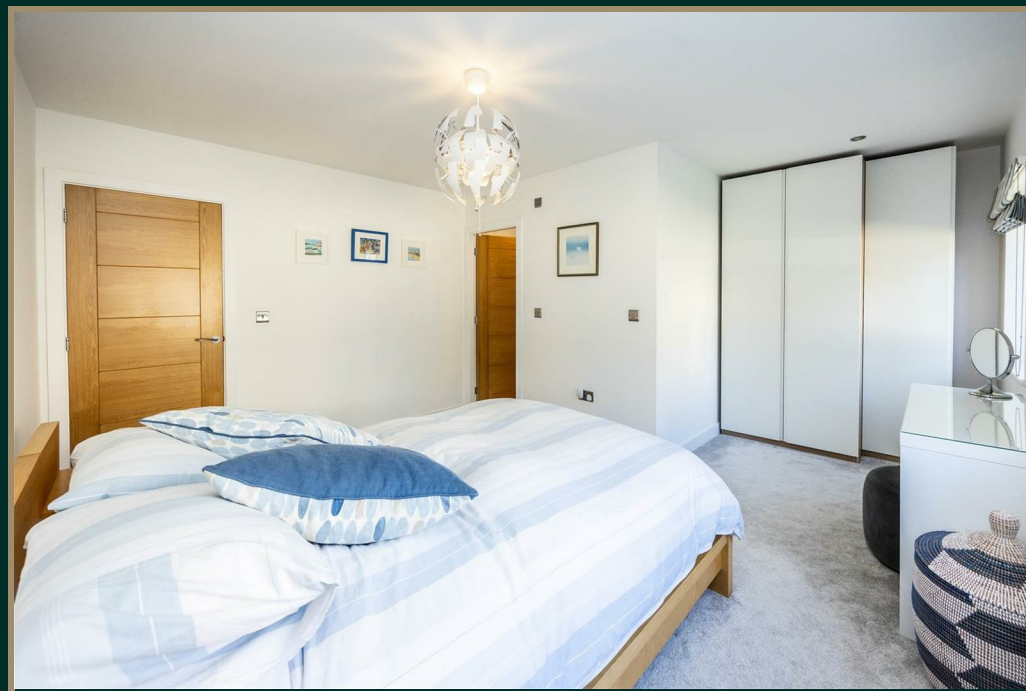
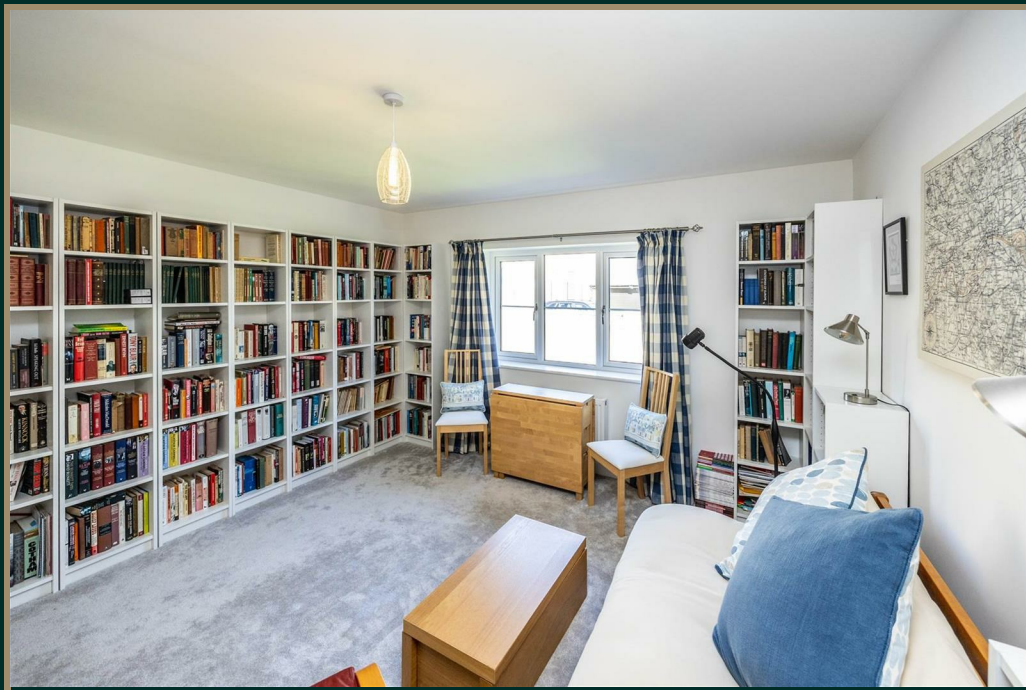
The property has maintained gardens, mainly laid to lawn with flower borders and patio areas—ideal for outdoor entertaining or family play. To the front, a secure electric gated





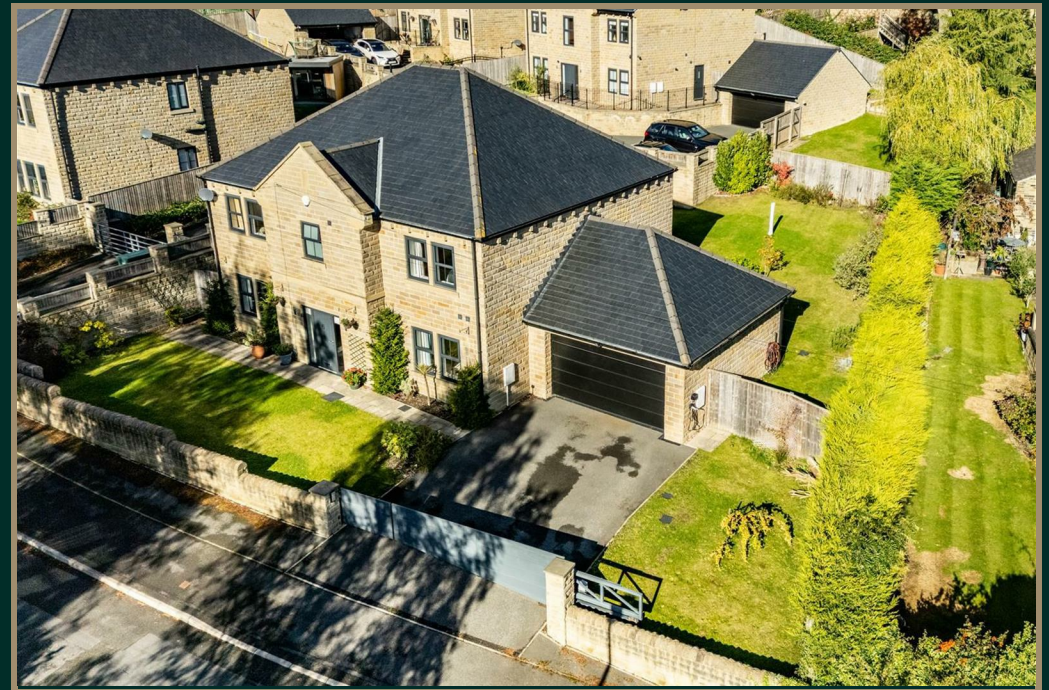


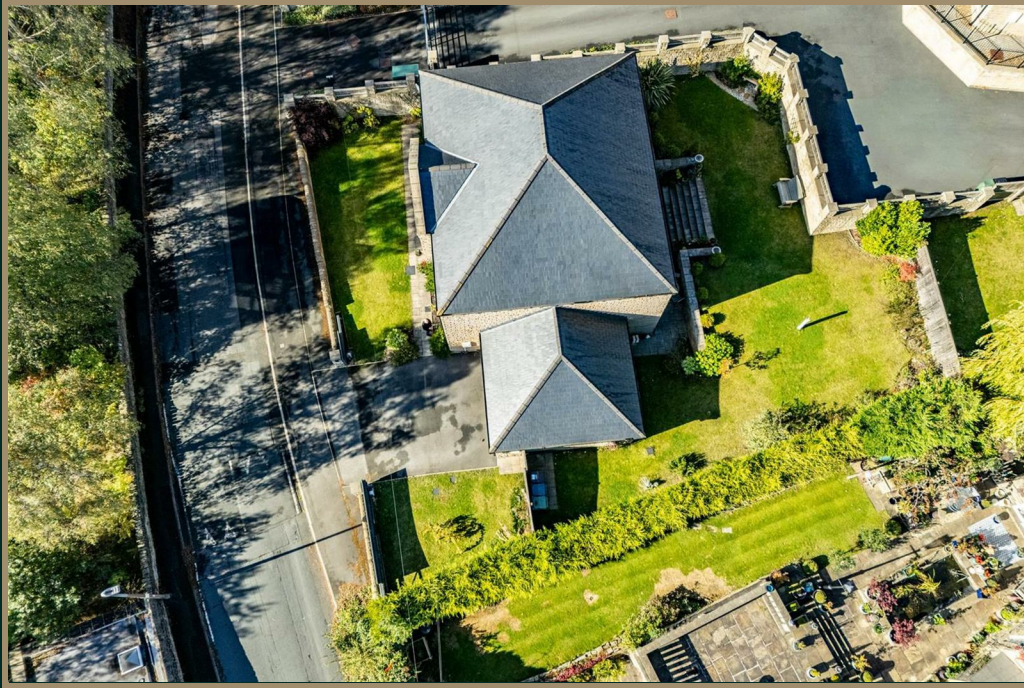


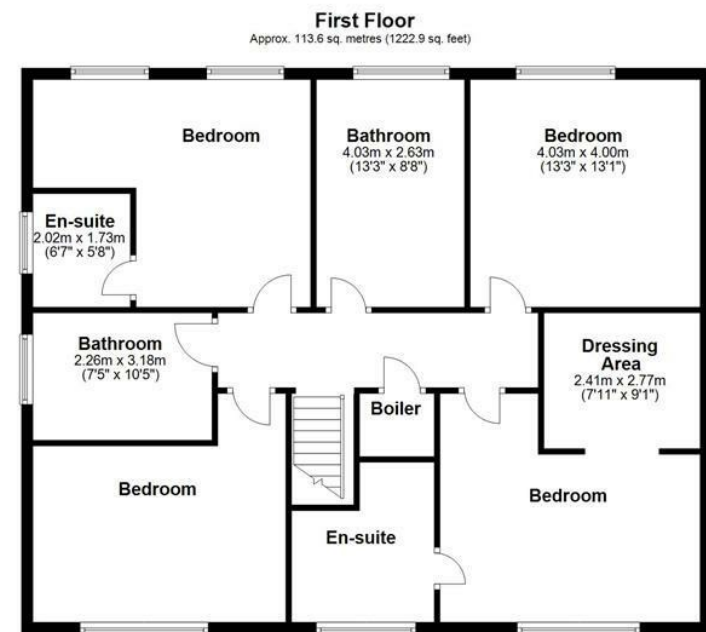












Total area: approx. 258.8 sq. metres (2785.4 sq. feet)



YORKSHIRE'S
FINEST
HOMES COLLECTION

To view Snelsins Road, Cleckheaton
Call 01484 432 773
Email sales@yorkshiresfinest.co.uk