



YORKSHIRE'S
FINEST
HOMES COLLECTION



The Cottage, Widdop Road,

Offers In The Region Of
£500,000

- Grade II Listed
- Rural Location
- Detached Property
- Amazing Views
 - Annexe
- Barn and Cottage can be sold separately
 - Barn £700,000
 - Cottage £500,000

Yorkshire's Finest is delighted to present this stunning Grade II listed 18th-century residence. Steeped in history and character, the property enjoys an idyllic setting with breathtaking views across the surrounding countryside — all just a short 15-minute drive from the picturesque town of Hebden Bridge.



Yorkshire's Finest is delighted to present this enchanting Grade II listed 18th-century cottage, brimming with charm and character. Set in an idyllic rural location with breathtaking views across the surrounding countryside, this historic home offers peace and privacy — all just a short 15-minute drive from the picturesque town of Hebden Bridge.

Originally part of a larger estate, the cottage underwent a comprehensive renovation in the 1990s, transforming it into a beautifully appointed residence that perfectly balances period elegance with modern comfort.

Inside, the cottage features a delightful kitchen fitted with solid pine units, a spacious living room with exposed beams, and a separate dining room with stairs leading to the first floor. Upstairs, there are three well-proportioned double bedrooms and a generously sized shower room, offering comfortable accommodation for family living or guests.

Outside, the property enjoys access to beautifully maintained gardens and ample parking, approached via a long driveway from the lane.

Connected to mains electricity, the cottage offers a rare opportunity to own a slice of Yorkshire history in a truly tranquil and picturesque setting. Whether as a charming full-time residence, a weekend retreat, or a potential holiday let, this exceptional home captures the timeless appeal of countryside living.

ADDITIONAL INFORMATION

Tenure: Freehold

Council Tax: Band F

EPC: Grade 2 Listed Building

What3Words: reunion.defeated.curls

Parking: On Driveway

Easements: Right Of Way





UTILITIES

Gas: No

Electric: Mains

Water & Drainage: Private, Septic Tank

Heating: Oil Fired

Broadband: Superfast Available

Mobile Coverage: 4G Available - check with your provider.

1. MONEY LAUNDERING REGULATIONS: Intending purchasers will be asked to produce identification documentation at a later stage and we would ask for your co-operation in order that there will be no delay in agreeing the sale.

2. General: While we endeavour to make our sales particulars fair, accurate and reliable, they are only a general guide to the property and, accordingly, if there is any point which is of particular importance to you, please contact the office and we will be pleased to check the position for you, especially if you are contemplating travelling some distance to view the property.

3. The measurements indicated are supplied for guidance only and as such must be considered incorrect.

4. Services: Please note we have not tested the services or any of the equipment or appliances in this property, accordingly we strongly advise prospective buyers to commission their own survey or service reports before finalising their offer to purchase.

5. THESE PARTICULARS ARE ISSUED IN GOOD FAITH BUT DO NOT CONSTITUTE REPRESENTATIONS OF FACT OR FORM PART OF ANY OFFER OR CONTRACT. THE MATTERS REFERRED TO IN THESE PARTICULARS SHOULD BE INDEPENDENTLY VERIFIED BY PROSPECTIVE BUYERS OR TENANTS. NEITHER YORKSHIRES FINEST LIMITED NOR ANY OF ITS EMPLOYEES HAS ANY AUTHORITY TO MAKE OR GIVE ANY REPRESENTATION OR WARRANTY WHATEVER IN RELATION TO THIS PROPERTY.

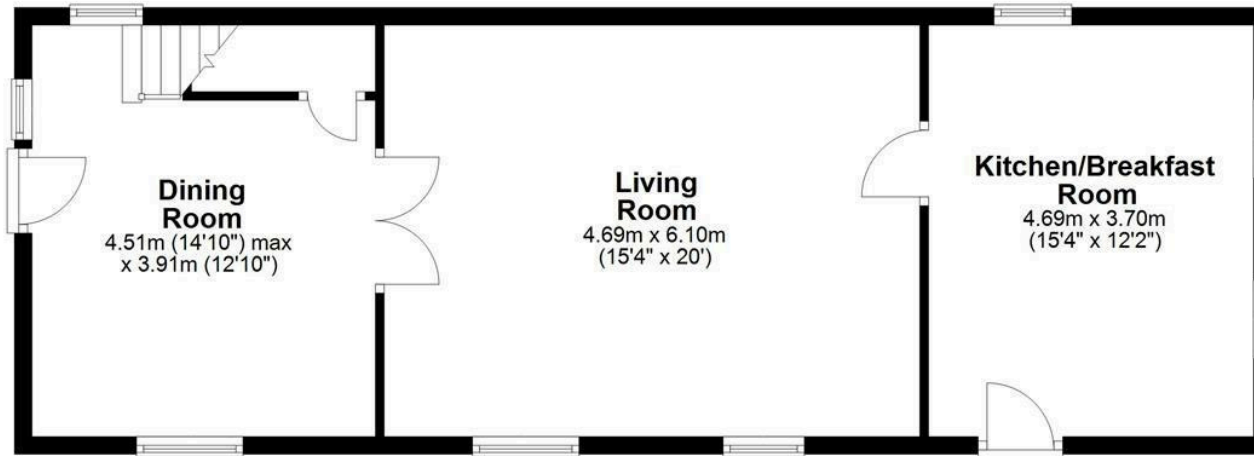






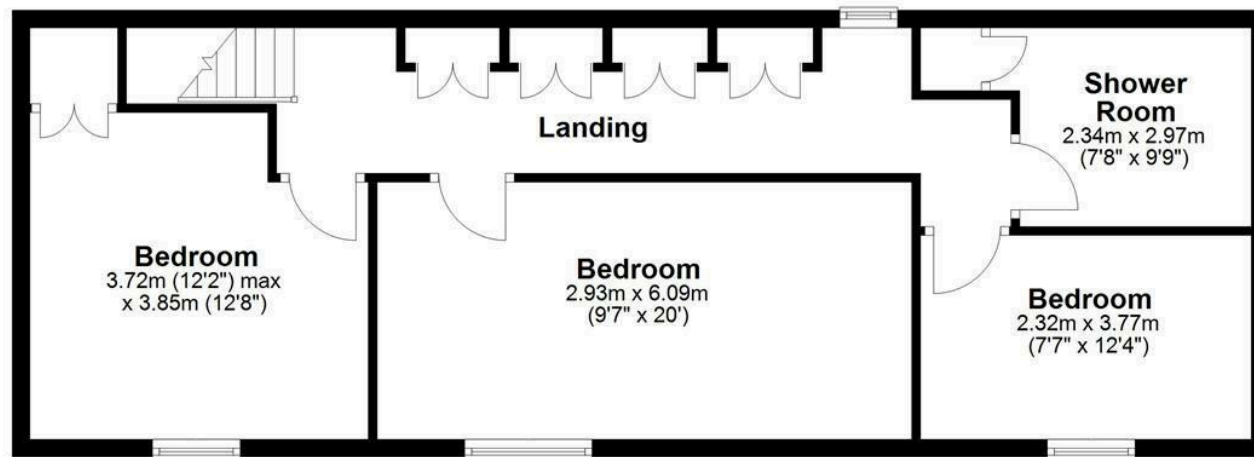
Ground Floor

Approx. 64.5 sq. metres (694.4 sq. feet)



First Floor

Approx. 65.0 sq. metres (699.9 sq. feet)



Total area: approx. 129.5 sq. metres (1394.4 sq. feet)



YORKSHIRE'S
FINEST
HOMES COLLECTION

To view The Cottage, Widdop Road, Hebden
Bridge
Call 01484 432 773