



YORKSHIRE'S
FINEST
HOMES COLLECTION



Maple House, Grange Court,

£775,000



Grange Court is an exclusive development of three exceptional stone-built, five-bedroom detached homes, ideally located in the heart of Hipperholme. Set on one of the village's most sought-after plots, these beautifully crafted properties offer private driveways, secluded gardens, and sweeping views over the Stray - perfectly blending traditional village charm with contemporary living.

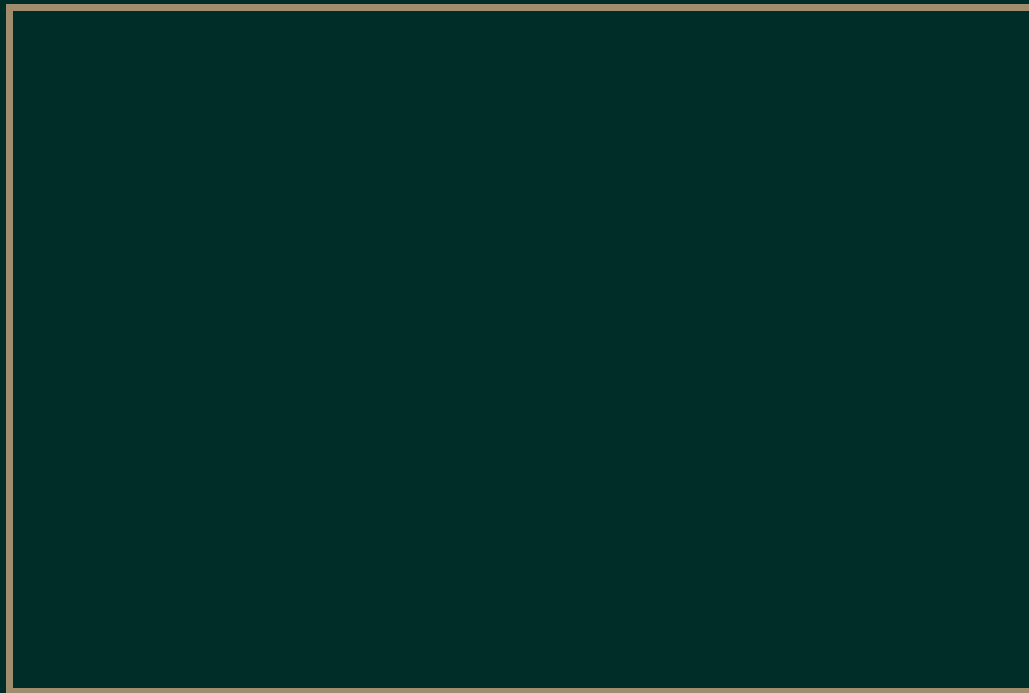
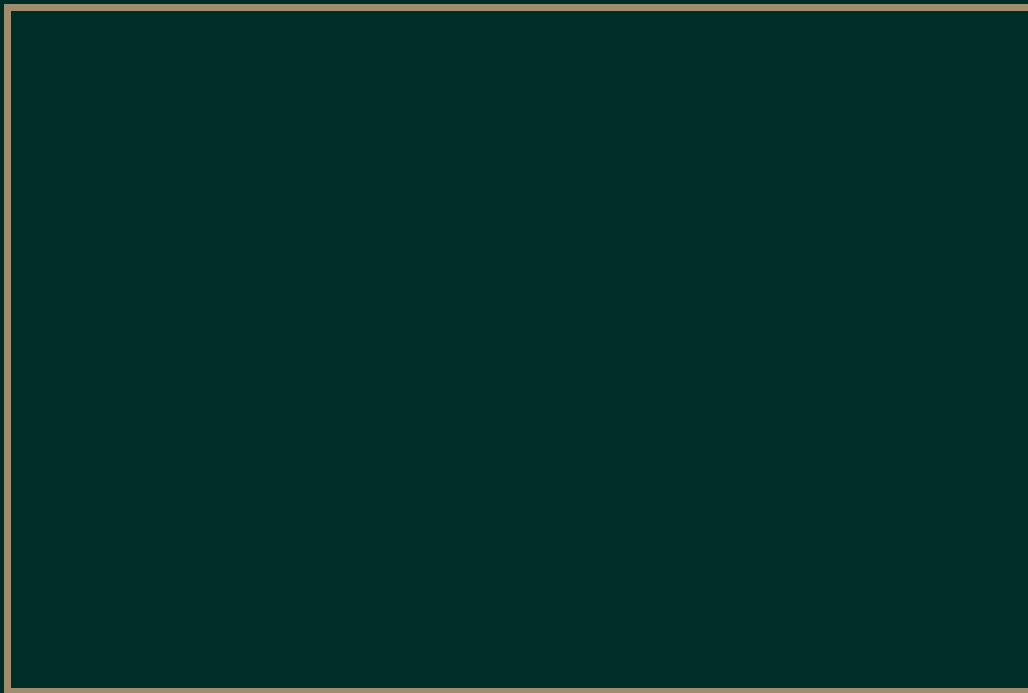
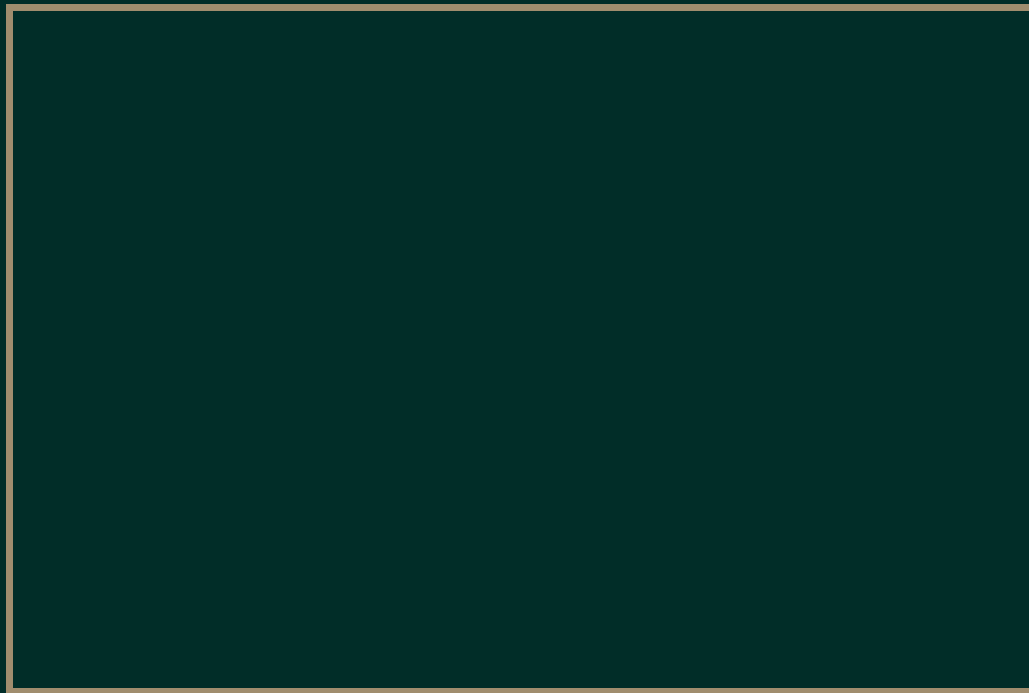
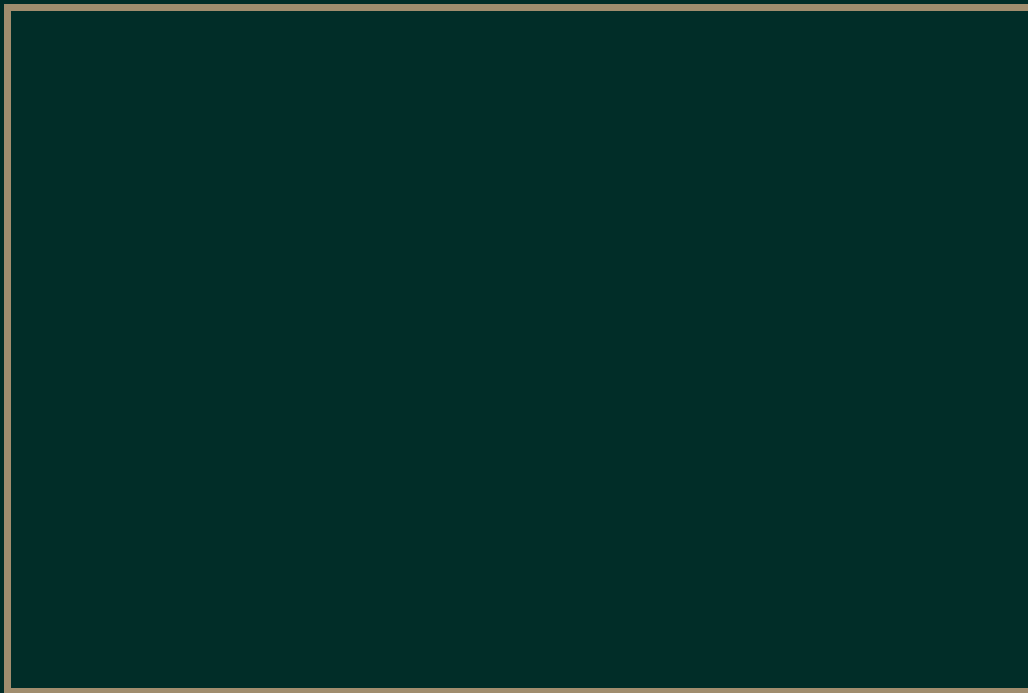


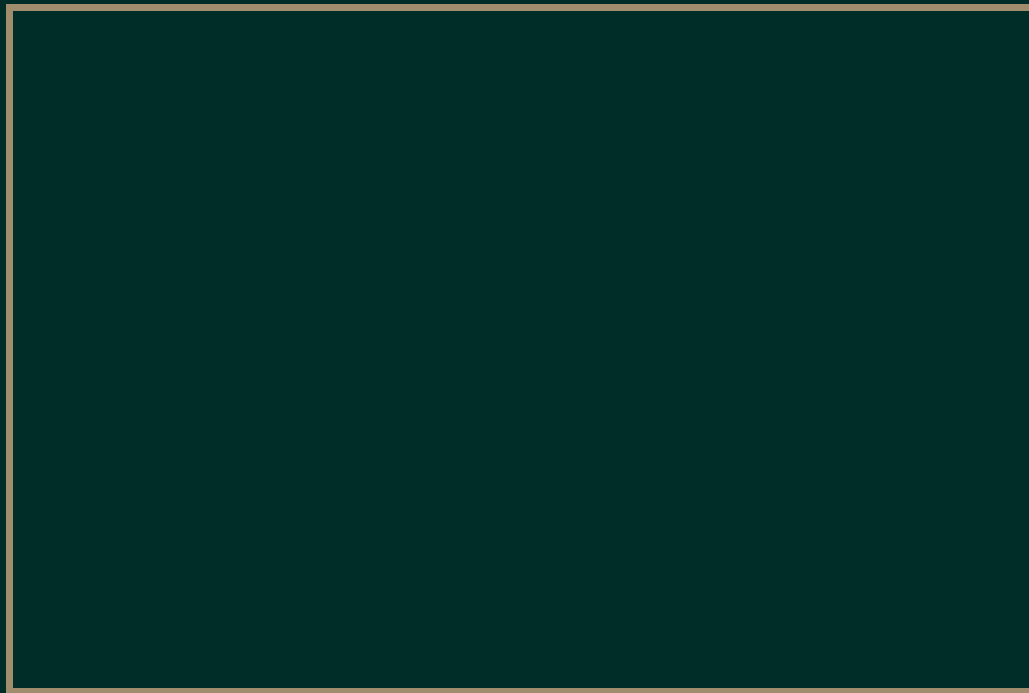
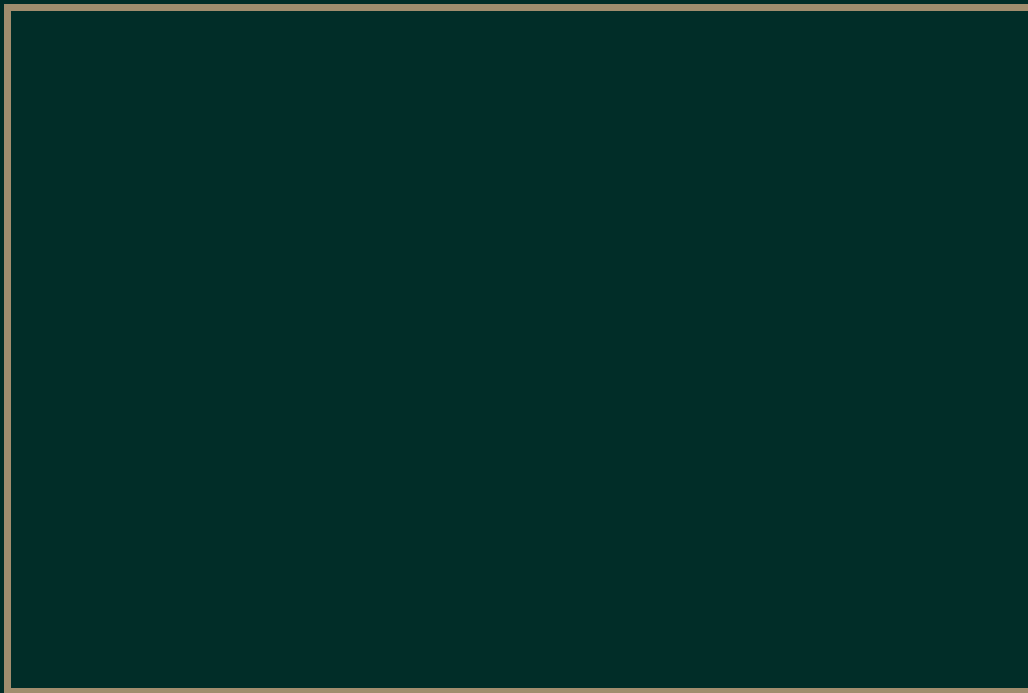


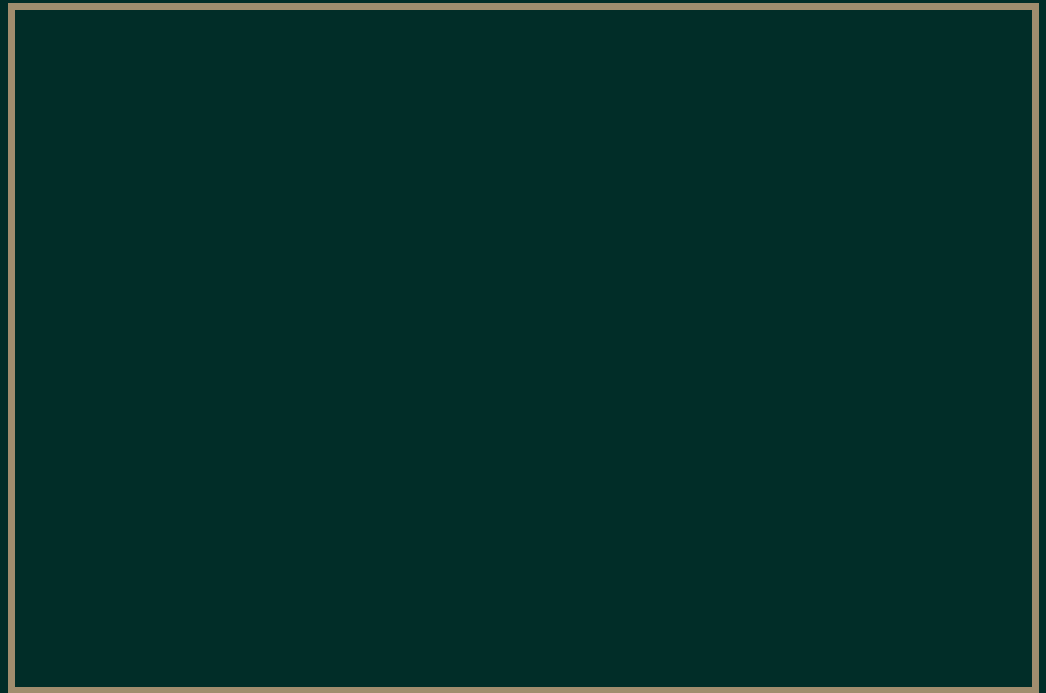


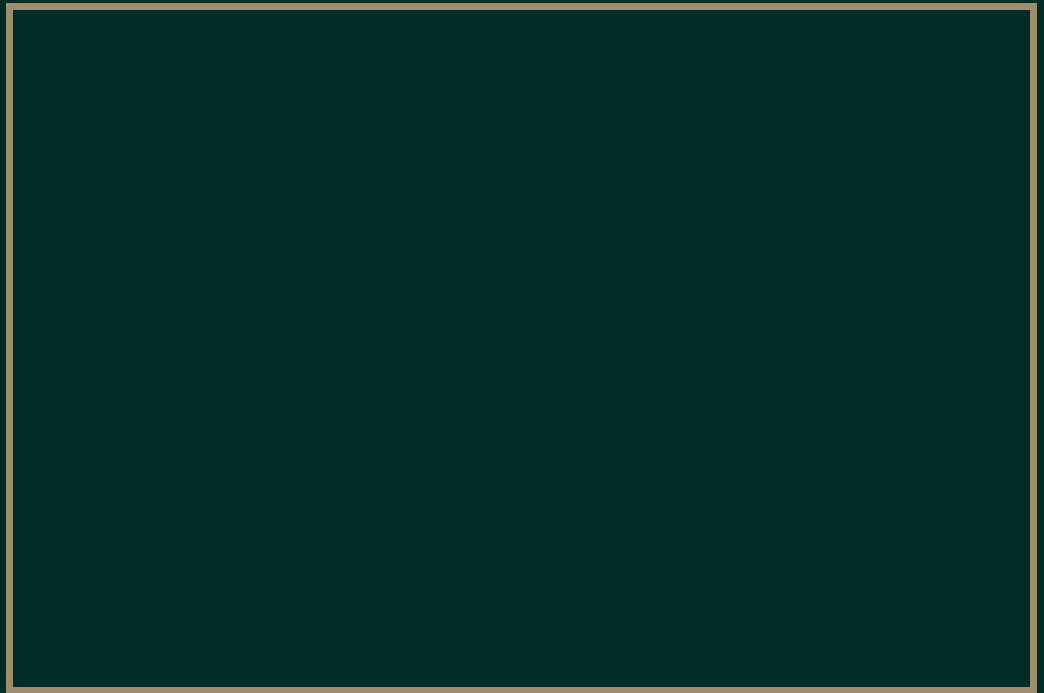
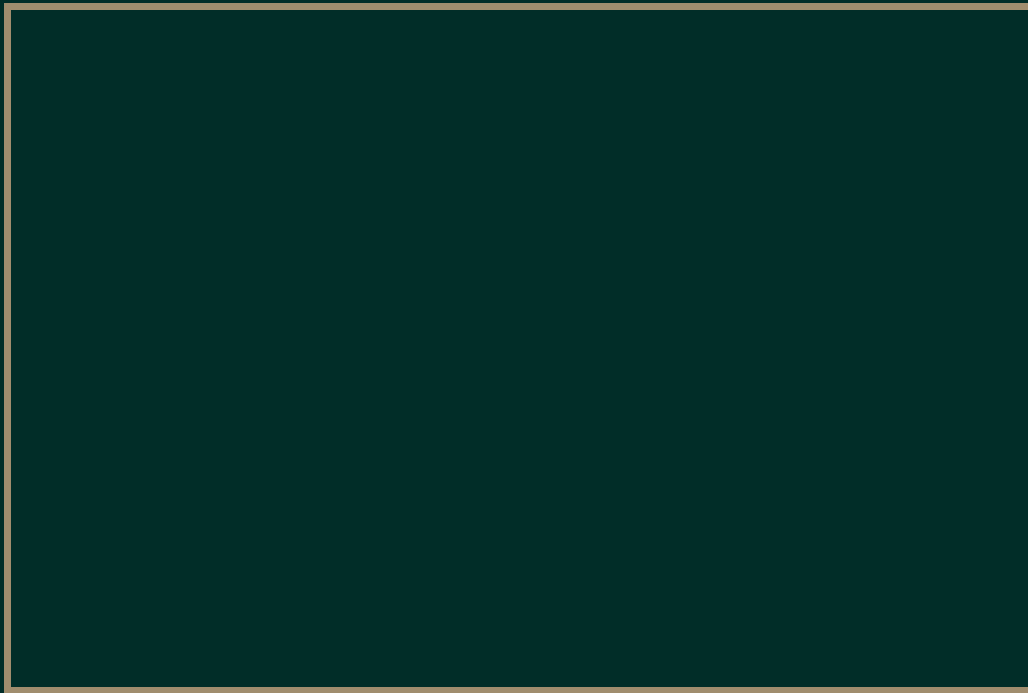


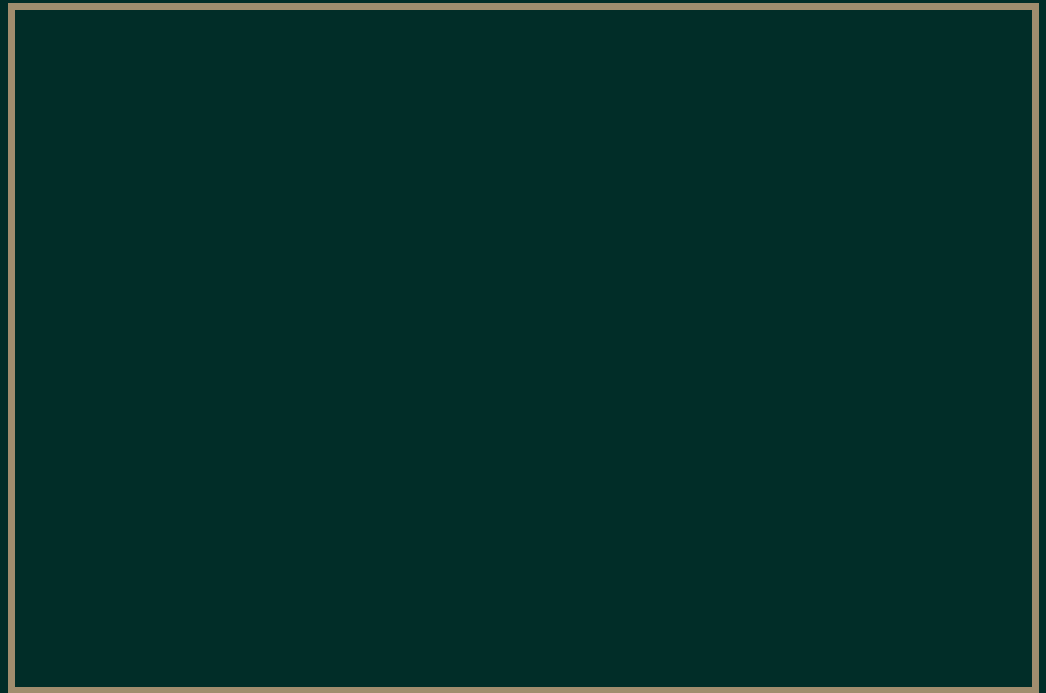


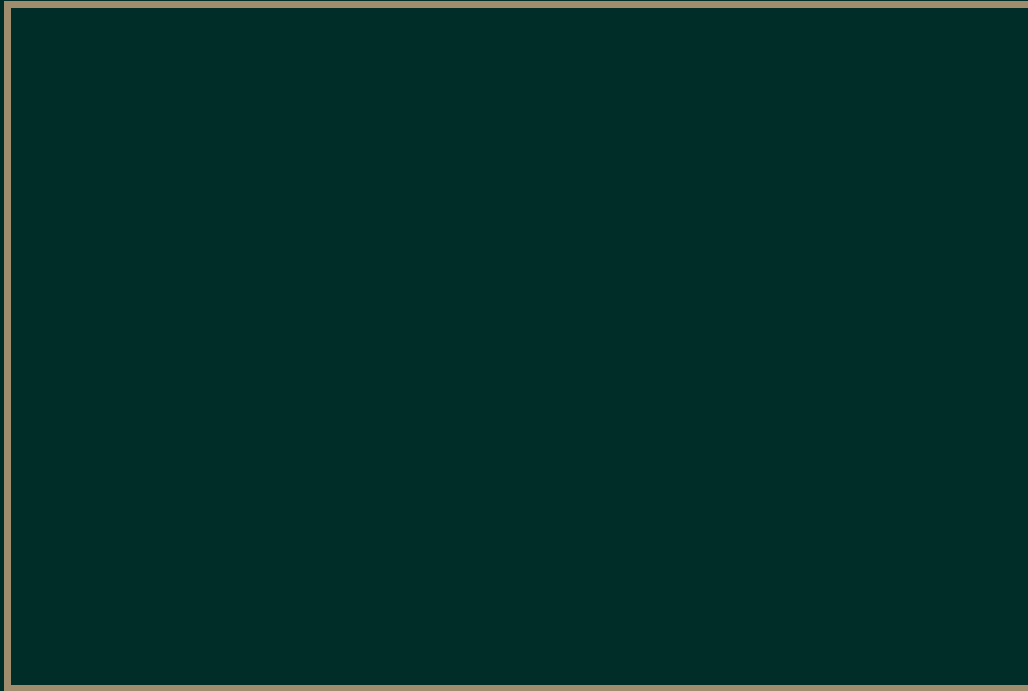


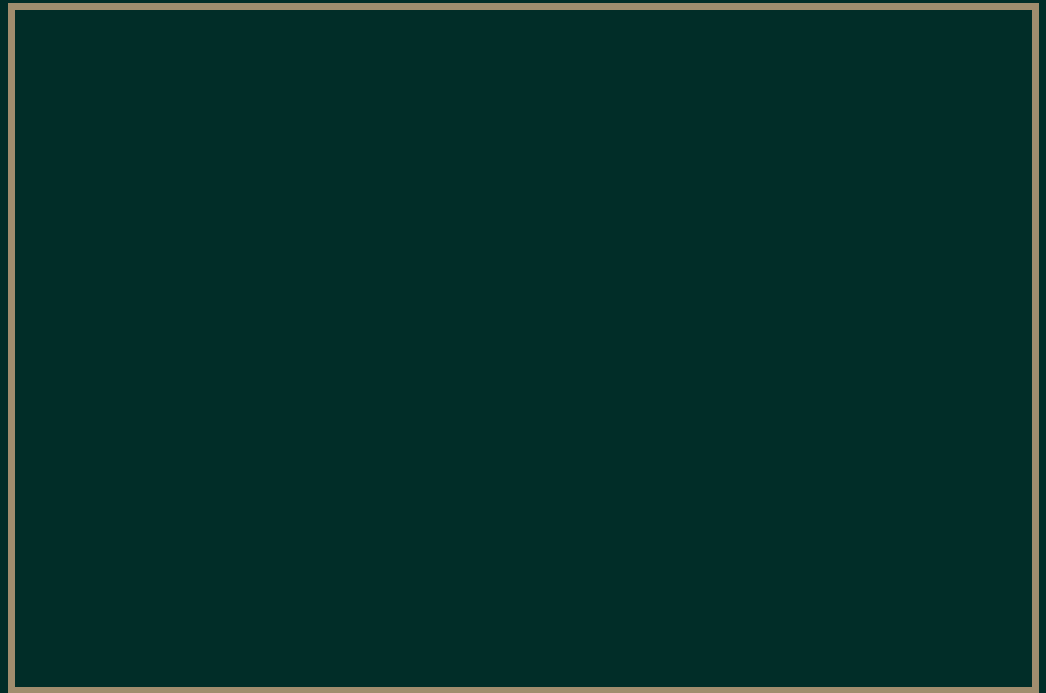


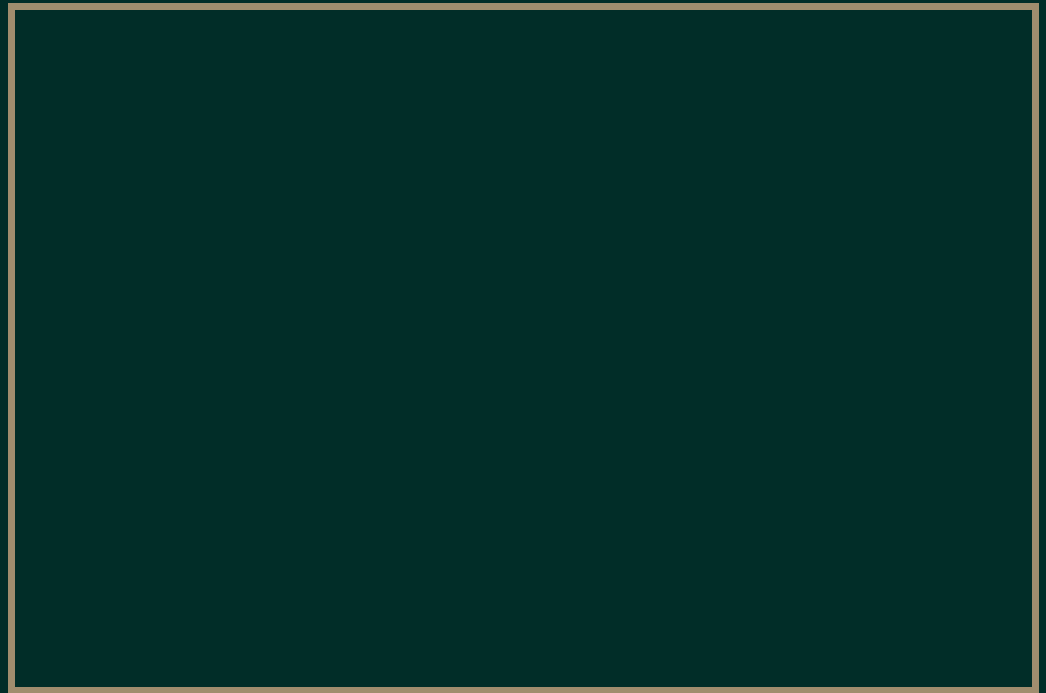
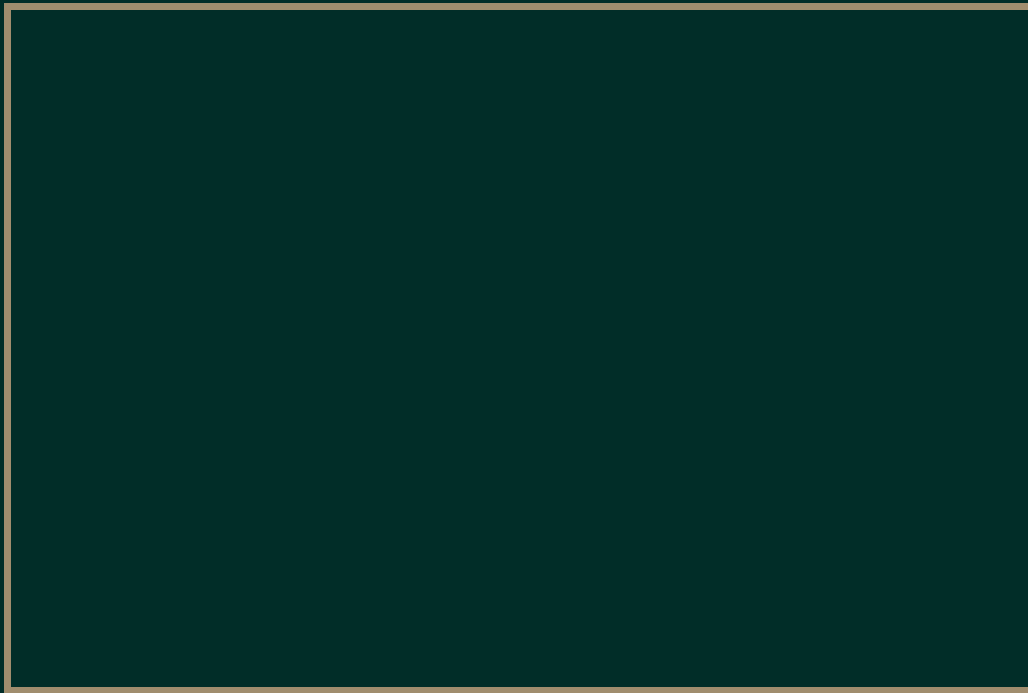


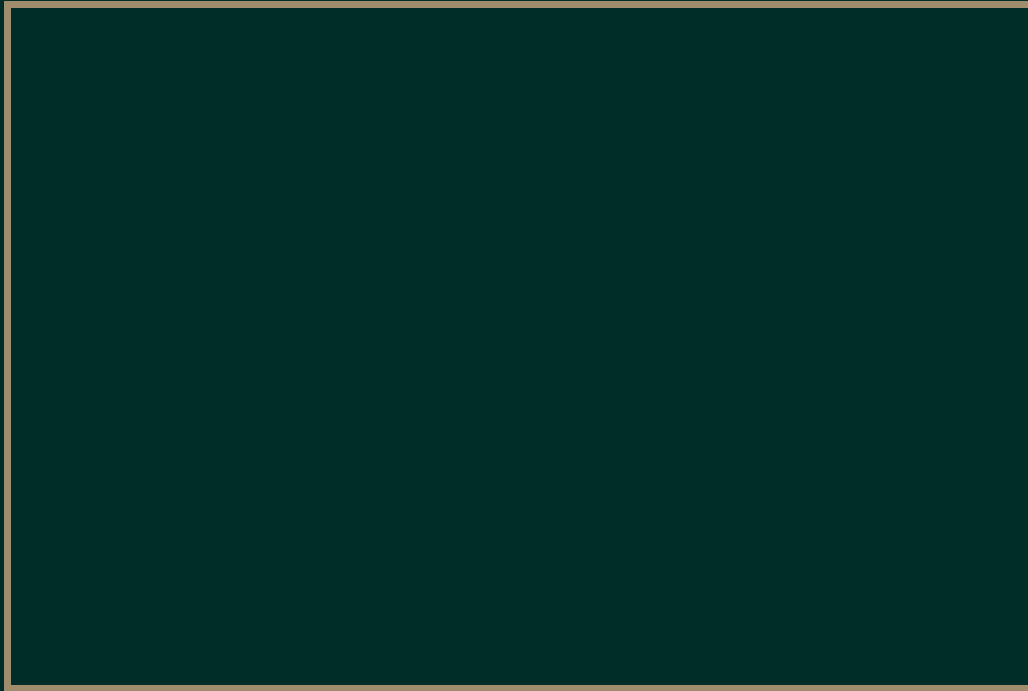


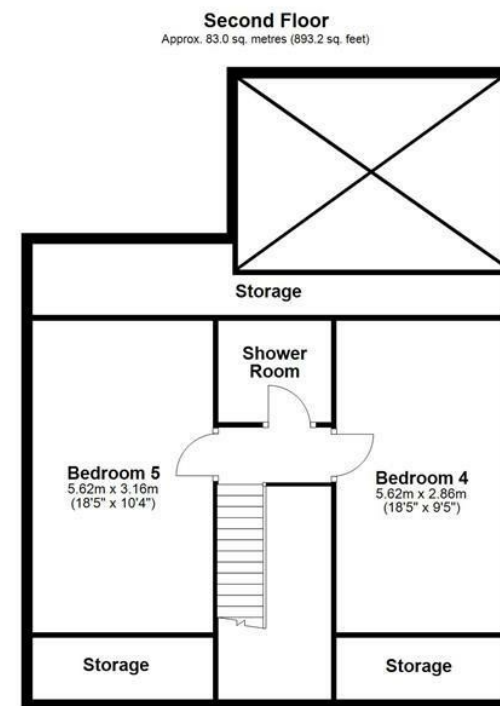
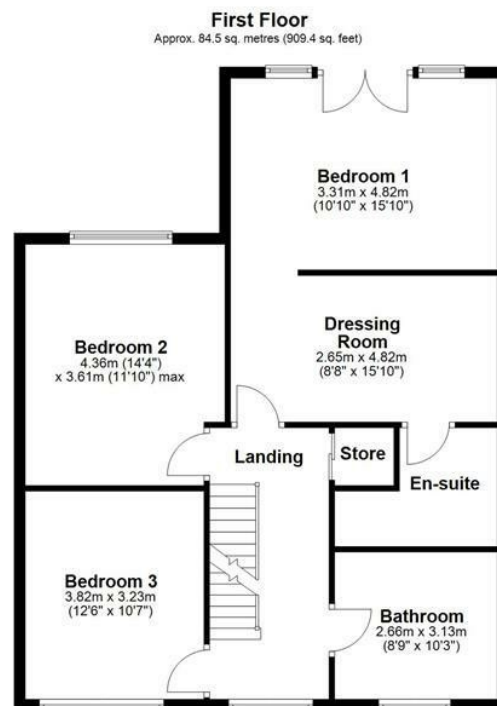
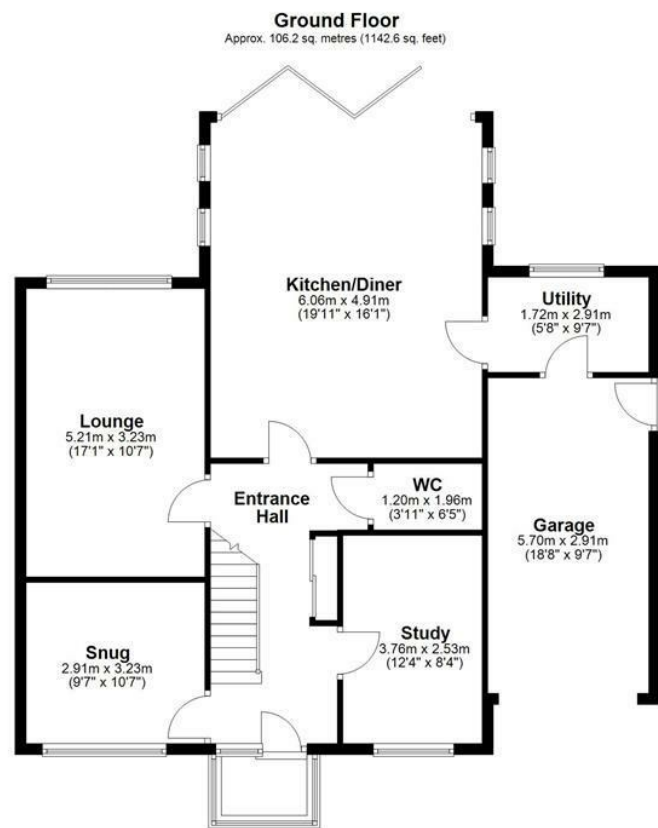












Total area: approx. 273.6 sq. metres (2945.2 sq. feet)



YORKSHIRE'S
FINEST
HOMES COLLECTION

To view Maple House, Grange Court,
Hipperholme
Call 01484 432 773