



YORKSHIRE'S
FINEST
HOMES COLLECTION



The Old Vicarage, West Park Street,

Offers In The Region Of

£1,500,000

- Exceptional period residence with grand proportions and elegant interiors
- Multiple reception rooms and a stunning kitchen diner
- Luxurious principal suite with balcony and dressing room
- Versatile attic rooms and extensive cellars with conversion potential
- Self-contained detached annex ideal for guests or income
- Gated entrance, ample parking, and beautifully landscaped private grounds

An exceptional period residence offering grand interiors, multiple reception rooms, and a luxurious principal suite. Set within beautiful private grounds with gated access, extensive cellars, and a detached self-contained annex—combining timeless elegance with versatile modern living.



An exceptional and distinguished period residence, this magnificent home is introduced through grand double doors set within an elegant archway, opening into a breath-taking reception hall. Defined by its sweeping staircase, soaring ceilings, and an abundance of natural light, the entrance sets a truly opulent tone for the rest of the property.

The principal hallway is both expansive and refined, showcasing exquisite wooden doors, intricate detailing, and large windows that bathe the space in sunlight, creating a warm yet impressive welcome.

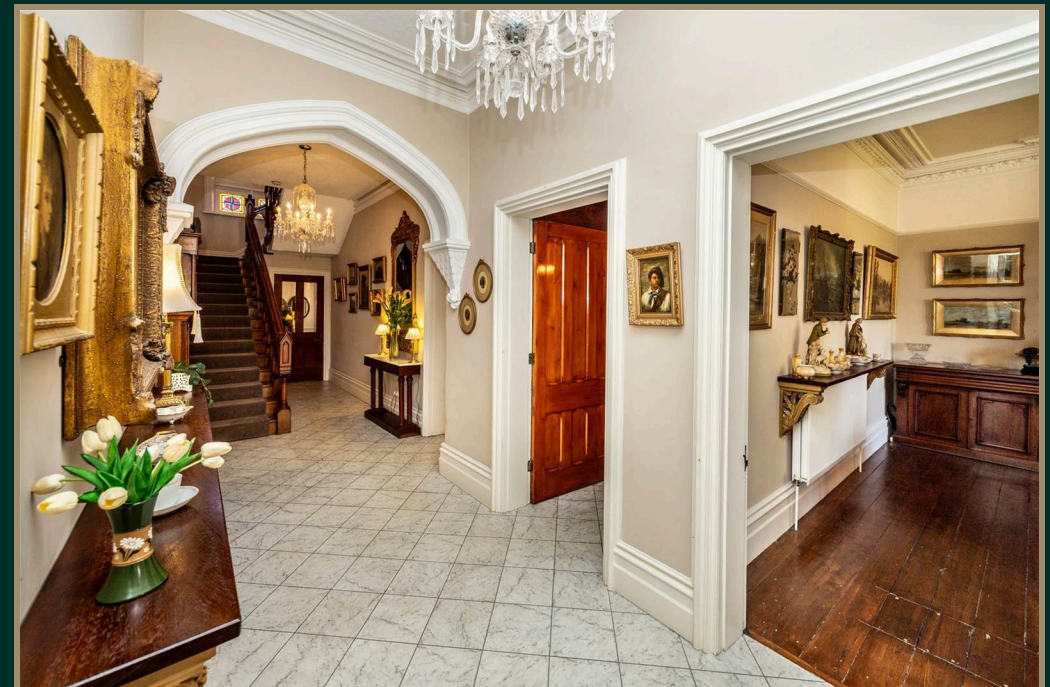
The first reception room offers a sophisticated yet inviting retreat, beautifully styled with light, contemporary décor, fine flooring, and a statement fireplace—perfect for elegant entertaining or relaxed evening drinks.

A formal dining room of remarkable character continues the home's sense of grandeur, featuring the original fireplace, expansive windows, and generous built-in storage. This is a space designed for hosting, where timeless style meets refined living.

The snug reception room provides a more intimate setting, complete with bespoke cabinetry, rich wooden flooring, and charming windows—an ideal sanctuary for quiet relaxation.

At the heart of the home lies the kitchen diner, a bright and beautifully arranged space positioned to maximise light from multiple aspects. Designed for both everyday living and informal entertaining, it is complemented by a substantial separate utility room fitted with quality units and ample workspace.

The guest cloakroom features substantial storage, including a stunning period fitted cupboard with a glass-panelled door, and is finished in a classic style with traditional downstairs WC facilities.





Ascending the sweeping staircase, the first-floor landing impresses with elegant coving, rich tones, and plush carpeting, leading to four beautifully appointed bedrooms.

The principal suite is a statement of luxury, offering generous proportions, a private balcony, and a feature fireplace. It is further enhanced by a stylish en-suite with a walk-in shower and an adjoining dressing room (formerly an additional bedroom, offering flexibility to reconfigure).

Bedroom two is an equally impressive guest suite, featuring period detailing, wooden flooring, a fireplace, and a private en-suite bathroom accessed via an elegant archway.

Bedroom three is a substantial double bedroom, tastefully styled with modern finishes while retaining traditional charm, including fitted cupboards, a feature fireplace, and arched windows overlooking the grounds.

The house bathroom is beautifully curated, centred around a freestanding roll-top bath with classic Victorian fittings, complemented by elegant design details and natural light.

The attic level presents further opportunity, with two additional bedrooms offering excellent potential, along with a further room ideal for conversion into a study or luxurious bathroom.

Extensive cellars include a workshop, wine cellar, and versatile storage areas, all offering excellent scope for conversion into a private gym, studio, or home office.

A standout feature is the self-contained detached annex, thoughtfully designed to provide independent luxury living. Comprising a ground-floor bedroom and bathroom, alongside a first-floor kitchen diner with the original stained glass window and a characterful lounge with exposed beams, this space is ideal for guests, extended family, or premium short-term letting.



The property is approached via a gated entrance, leading to expansive private grounds with extensive parking. The landscaped gardens are beautifully maintained, featuring manicured lawns, mature trees, a vegetable garden, greenhouse, and a tranquil pond. A generous patio terrace provides the perfect setting for refined outdoor entertaining.

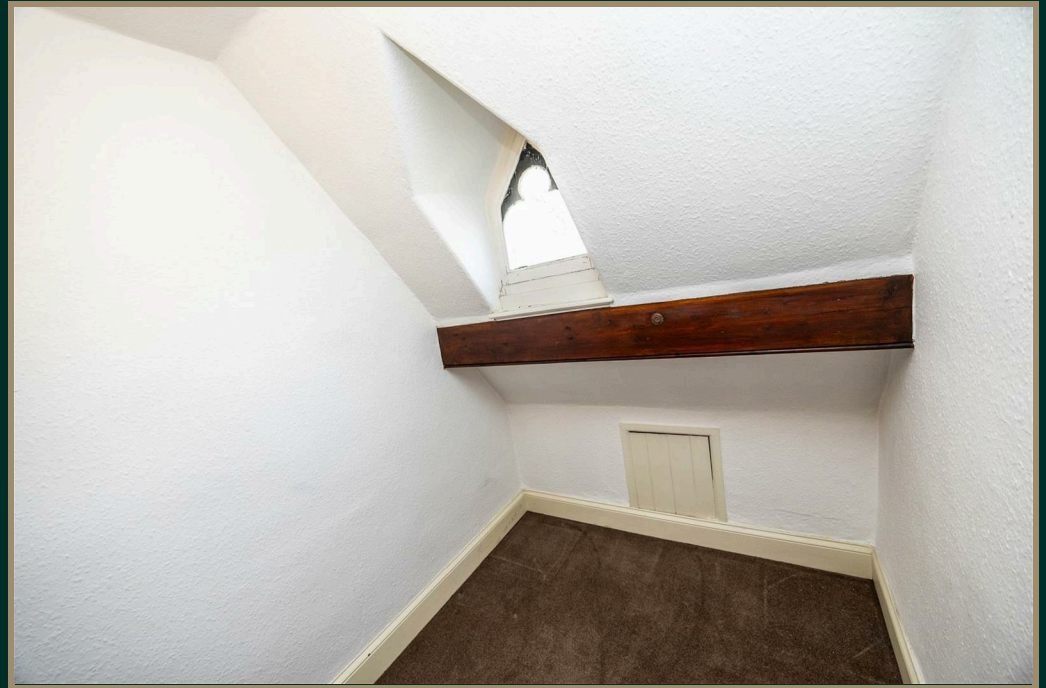
This is, without question, one of the most prestigious and captivating homes in the area—offering a rare combination of heritage, elegance, and lifestyle.



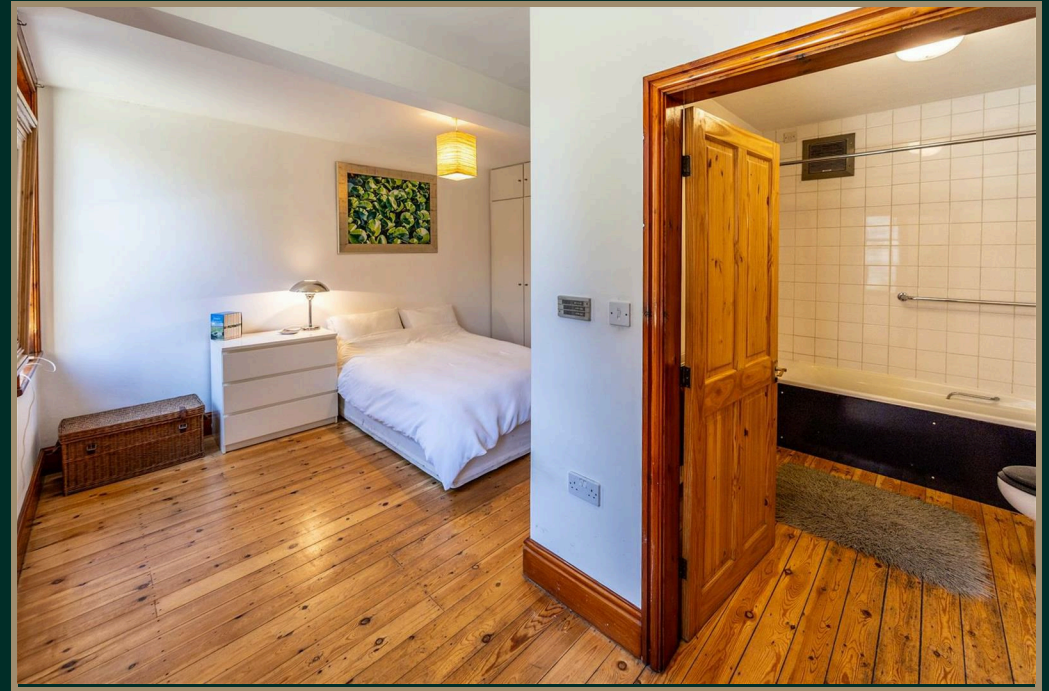




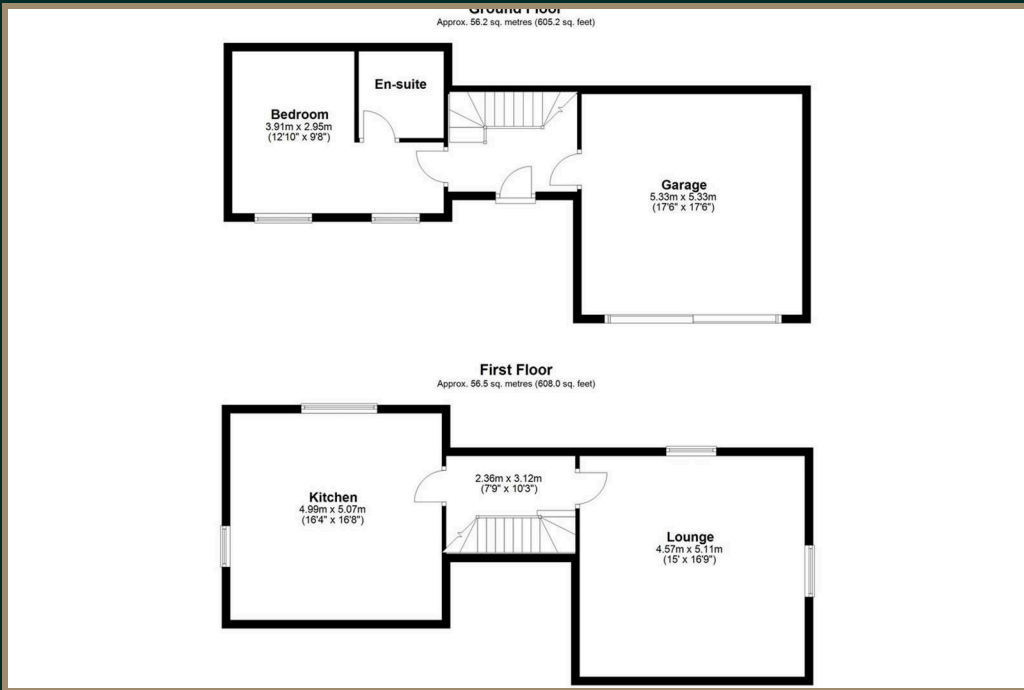


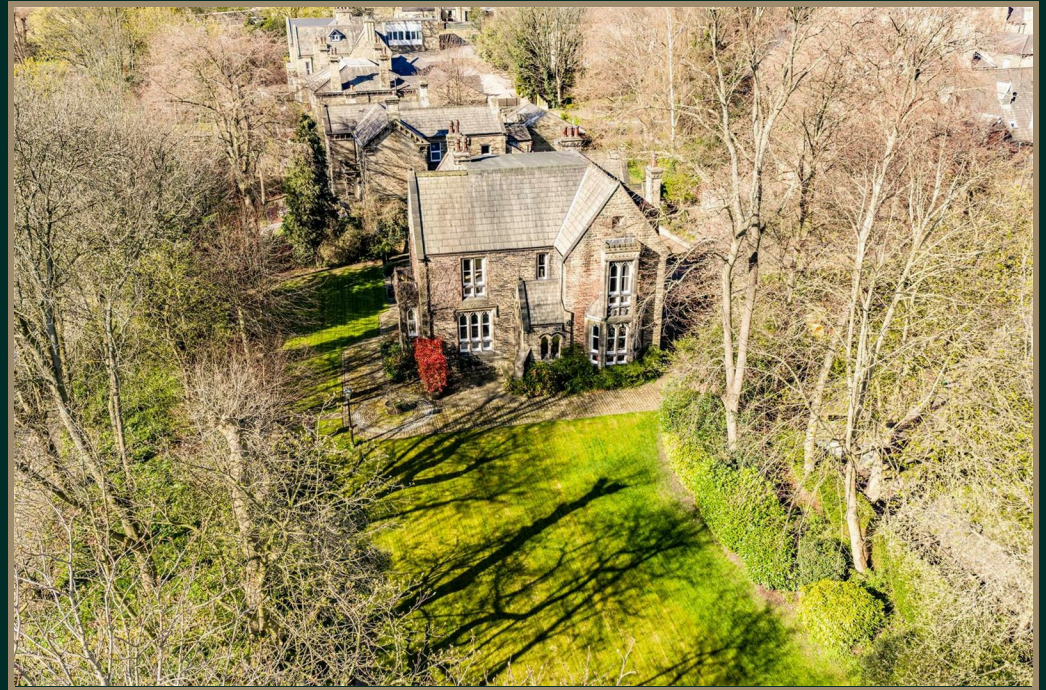




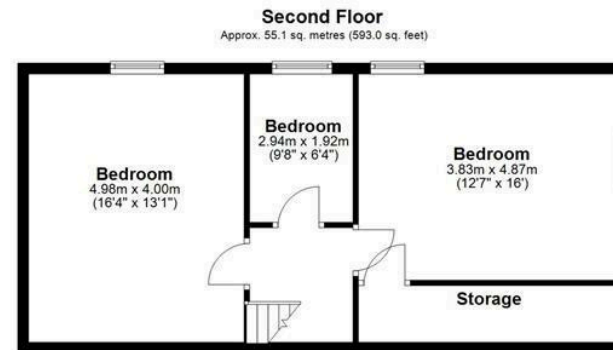
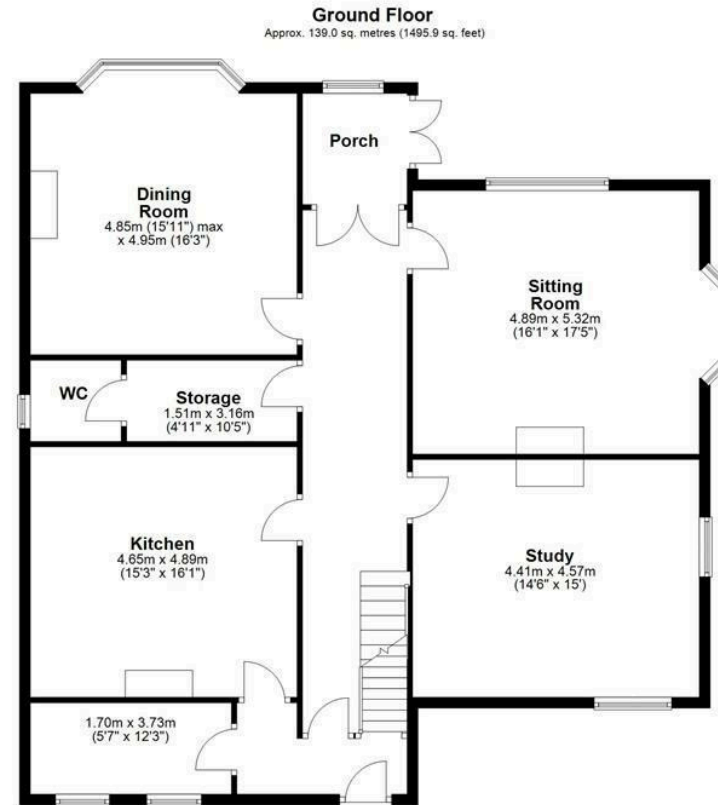
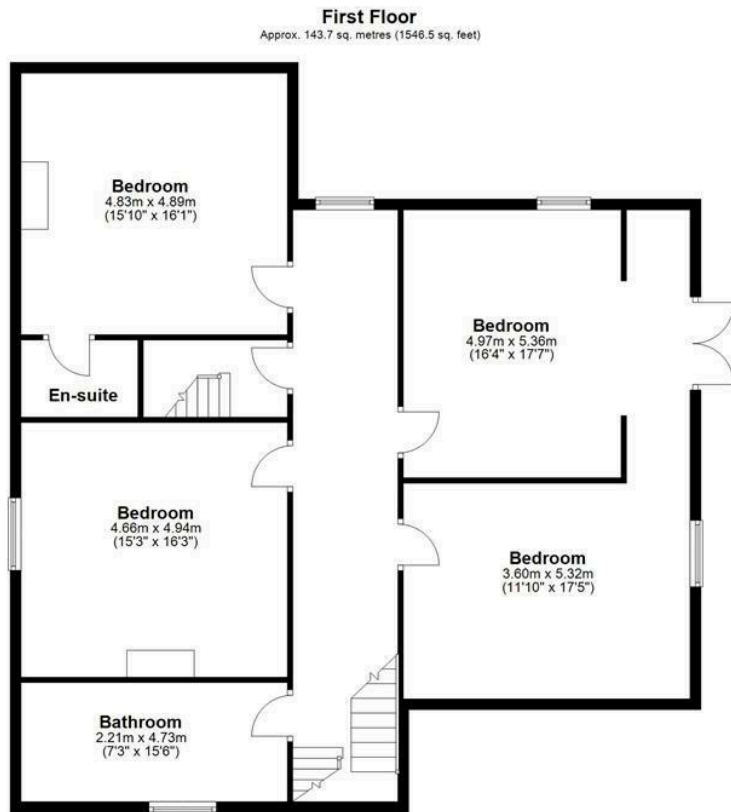












Total area: approx. 337.7 sq. metres (3635.4 sq. feet)



YORKSHIRE'S
FINEST
HOMES COLLECTION

To view The Old Vicarage, West Park Street,
Call 01484 432 773
Email sales@yorkshiresfinest.co.uk