



YORKSHIRE'S  
**FINEST**  
HOMES COLLECTION

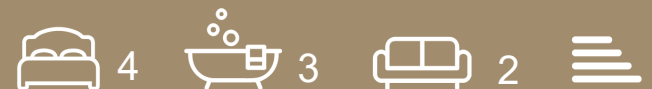
# Daleside, Dewsbury

Offers In The Region Of  
£625,000

- Beautifully renovated detached home with stunning panoramic views and contemporary décor throughout
- Superb open-plan dining kitchen with island, integrated appliances and spacious entertaining area
- Magnificent sitting room with patio doors opening onto fabulous decking and patio areas
- Luxurious principal bedroom suite with dressing area and stylish en-suite shower room
- Three further double bedrooms, additional en-suite and stunning modern house bathroom
- Double garage, driveway parking, utility room, extensive storage and low-maintenance gardens

Stunning Contemporary Detached Home with  
Panoramic Views with no upper chain

This magnificent detached property has been beautifully renovated throughout to an exceptional standard, offering luxurious contemporary living with breathtaking views and superb entertaining space.



The welcoming entrance hall features elegant wooden flooring and stylish glazed doors, creating an immediate sense of quality and sophistication. Stairs lead down to the lower ground floor, and access is given the substantial double garage and extensive storage facilities, together with access to a modern cloaks room.

At the heart of the home is a spectacular open-plan dining kitchen, fitted with an impressive range of modern wall and base units, integrated appliances including double ovens, an induction hob, extractor fan, fridge freezer and convenient pull-out storage bins. A central island provides the perfect informal dining area, while there is ample space for a large dining table and chairs, ideal for family living and entertaining. An open archway leads seamlessly into the stunning sitting room.

The sitting room is a magnificent space with contemporary décor, stylish flooring and large patio doors that perfectly frame the spectacular surrounding scenery. The doors open onto an extensive patio area, effortlessly blending indoor and outdoor living.

The first floor hosts a superb double bedroom featuring fitted wardrobes, fabulous décor and outstanding views. The luxurious en-suite shower room includes a walk-in rainfall shower, dual wash basins, heated towel rail and low-level WC, creating the perfect private retreat.

The lower ground floor continues the home's modern and stylish theme. The impressive principal bedroom suite offers generous proportions, a dressing area and a substantial en-suite bathroom complete with a rainfall shower, dual sink units and low-level WC. There are two further beautifully presented double bedrooms, both benefitting from fitted furniture and stunning views.

Serving this floor is a luxurious house bathroom featuring a freestanding bath, walk-in shower, contemporary vanity unit with storage beneath and elegant tiling throughout.

A spacious utility room provides excellent additional storage together with plumbing and space for a washing machine, tumble dryer, drying area and pantry storage.

Externally, the property enjoys fabulous, raised decking and patio areas, perfect for outdoor dining and barbecues, alongside a low-maintenance level garden. To the front, there is ample driveway parking leading to the integrated double garage.

This outstanding home combines luxury, space and spectacular surroundings, making it an exceptional property for modern family living.





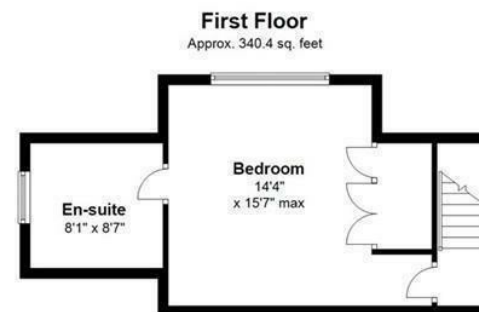












Total area: approx. 2804.5 sq. feet

Sketch Plan For Illustrative Purposes Only. All measurements of walls, doors, windows, fittings, and appliances including their sizes and location are shown conventionally and are approximate only. This cannot be regarded as being a representation either by the Seller, his Agent or DY Energy Assessors  
Plan produced using PlanUp.



YORKSHIRE'S  
**FINEST**  
HOMES COLLECTION

To view Daleside, Dewsbury  
Call 01484 432 773  
Email [huddersfield@yorkshiresfinest.co.uk](mailto:huddersfield@yorkshiresfinest.co.uk)